





公司理念

COMPANY PHILOSOPHY

Since 1970

The other or us

- Unforeseen changes or continuous reliability.
- Best price offers or best price/performance ratio.
- Short-term profit or reliable return.
- One-off sales or long-turn customer satisfaction.

WELCOME TO CHENG I WIRE MACHINERY

These choices are our daily tasks.

Working to resolve these differences has made us stronger, in technology, innovation and quality.

More than 45 years of passion and expertise in wire drawing technologies gives our customers a decisive edge and our experience is here to put you ahead of the competition.

We help our customers get the most out of their investment and our equipment. This is one of our core values and it is Cheng I Wire's responsibility to continue with this approach.

別人或是我們

- 不可預測的變化或是永久的信賴。
- 最低的價格或是最高的性價比。
- 短期的收益或是穩地的回報。
- 一次性的買賣或是長期獲得客戶的信賴。

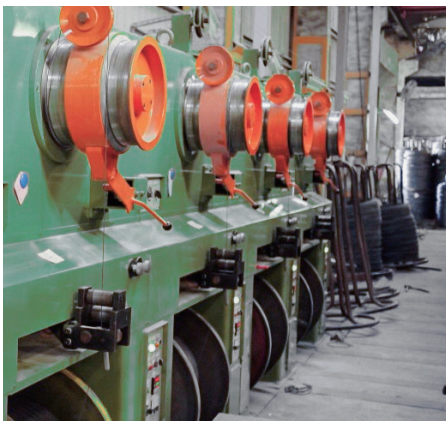
歡迎來到正一直線

這些選擇是我們每天的挑戰。

努力解決以上差異使我們在技術，創新和品質方面更加茁壯。

超過 45 年的熱情和專業在抽線技術的領域上，為我們的客戶提供了決定性的優勢，我們的經驗使您在競爭中處於領先地位。

我們幫助客戶充分利用其投資和設備，是我們的核心價值之一，也是正一直線的責任與持續發展的理念。






**YOUR
SUCCESS
IS OUR
BUSINESS**

Commitment by
Cheng I Wire

您的成功，是我們的契機



WIRE DESCALING MACHINE

除鏽系列

Specifications subject to change without prior notice.

*規格如有變更，不另行通知。

DESCALING MACHINE (BENDING)

彎曲除鏽機

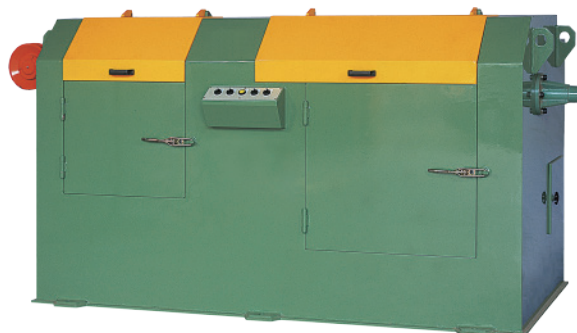
■ SDC-7N



■ SDC-10T



■ SDC-12AGF ■ SDC-16AGF



| model | SDC-7N | SDC-10T | SDC-12AGF | SDC-16AGF |
|------------|-----------|----------|-----------|-----------|
| Wire range | 5.5~6.5mm | 5.5~10mm | 5.5~12mm | 5.5~15mm |

- Wire Pre-treatment: Used to remove mill scale and surface oxidation.
- Rugged welded construction.
- Wire working ranges up to $\Phi 16\text{mm}$.
- Supplied with 3 or 5 orthogonal bending rollers.
- Tungsten carbide roll inserts.
- Adjustable straightener. (SDC-10T)
- Motorized bending roller adjustment. (SDC-12AGF/16AGF)
- Straight pass through wire rod threading for ease of stringing. (SDC-12AGF/16AGF)
- 線材經過上下左右彎曲，去除表面氧化殼。
- 堅固的焊接結構。
- 工作線徑最高可達 $\Phi 16\text{mm}$ 。
- 機台內包含 3 – 5 彎曲輪。
- 彎曲輪內安裝鎢鋼輪。
- 含動力送線設備。(SDC-12AGF/16AGF)
- 彎曲輪可調整角度。(SDC-12AGF/16AGF)

ABRASIVE BELT DESCALING MACHINE

砂布除鏽機

■ SBH-7

■ SBH-12



| model | SBH-7 | SBH-12 |
|------------|-----------|----------|
| Wire range | 5.5~7.0mm | 5.5~12mm |

- High-Speed Single Head design for perfect abrasive sanding at speeds up to 5.0 m/s.
- SBH descalers are designed for low, medium, high carbon and stainless-steel rod.
- Suitable for all in-line wire drawing applications. Including the complete range of rod diameters, inlet speeds, and surface finish requirements.
- Modular construction for ease of instruction. Multiple units may be installed in-line for progressive rod surface finish applications.
- Operator friendly control panel and convenient access doors for superior productivity and ease of use.
- Supplied with dust collector.
- 高速單頭設計，速度可配合後段伸線機台，達 5.0 米 / 每秒。
- 適用於所有線上抽線設備。
- 涵蓋完整的線材尺寸 / 入線速度，以及線材表面的光澤度需求。
- 模組化設計容易安裝，可安裝多個單元於線材生產線上，以滿足不同的線材表面處理需求。
- 友善的操作介面使設備容易使用，並有效優化生產的便利性。
- 提供集塵設備。

DESCALING / CLEANING MACHINE (BRUSHING)

鋼刷除鏽機

■ SDC-7B2

■ SDC-10B2

■ SDC-16B2



| model | SDC-7B2 | SDC-10B2 | SDC-16B2 |
|------------|-----------|----------|----------|
| Wire range | 5.5~6.5mm | 5.5~10mm | 5.5~15mm |

- Wire pre-treatment by motorized orbital brushing.
- Designed to remove surface oxidization and loose scale from the wire rod surface.
- Wire working ranges up to $\Phi 16\text{mm}$.
- Brushes automatically adjusts to the input wire diameter size.
- Different types of brushes can be installed to accommodate special surface treatment.
- Supplied with dust collector.
- 設計去除線材表面的氧化和鬆散的氧化皮。
- 4 個鋼刷圍繞線材周圍轉動，達到線材表面清潔效果。
- 刷子可自動壓緊線材。
- 可安裝不同形式刷子，以滿足不同的線材表面處理需求。
- 提供集塵設備。

DRY COATING UNIT

潤滑粉被覆機

■ LCS-7 ■ LCS-16



| model | LCS-7 | LCS-16 |
|------------|-----------|----------|
| Wire range | 5.5~7.0mm | 5.5~15mm |

- A lubricant application system to applies a film of dry-lubricant to wire rod for the cold rolling process.
- The lubrication is transported to the coating section by means of a motorized conveyor system.
- The rod passes straight through the system while a consistent film of lubricant is applied to the wire rod.
- Suitable to produce cold-rolled smooth or deformed wires.
- 線材通過潤滑粉槽，將潤滑粉覆蓋在線材表面上。
- 潤滑劑通過動力輸送系統，輸送到塗層室。
- 適用於生產冷軋線材和異型線材。

WATER CLEAN, WET COATING & DRYING UNIT

水清潔 / 披膜乾燥機

■ WCS-10M

■ WCS-16M



- High-pressure aqueous surface cleaning system.
- Combined wet coating (lubricant carrier) and drying.
- Environmentally friendly, effective and economic.
- Extensive control functions for a safe, repeatable process and low energy consumption.
- 線材通過高壓水流，清潔表面殘留氧化殼。
- 配合被膜烘乾機使用。
- 廢水通過鐵粉分離機將可被回收及再次利用。
- 不鏽鋼製水槽內含加熱器，可將水加溫至合適清洗溫度。

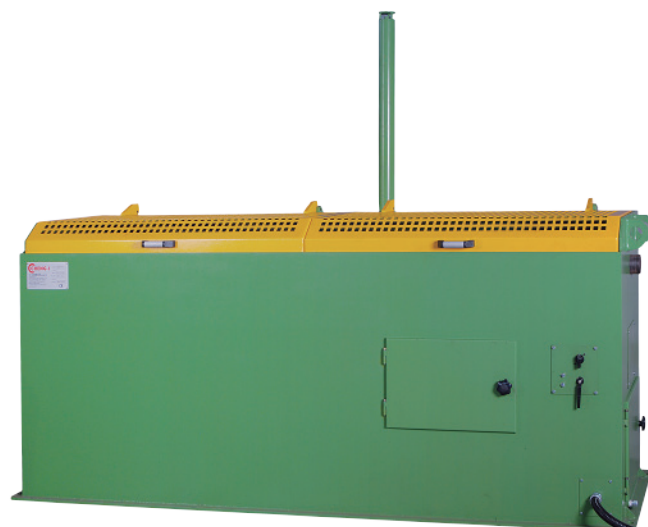
| model | WCS-10M | WCS-16M |
|------------|----------|----------|
| Wire range | 5.5~10mm | 5.5~15mm |

■ WCM-10

■ WCM-16

- Pre-coatings can be borax, salt coating, or specialty non-reactive pre-coatings.
- Direct in-line drying of wire rods by convection heating.
- Extensive control functions for a safe, repeatable process and low energy consumption.
- 可使過硼砂，石灰或是特殊潤滑粉，將線材表面塗層。
- 採用直接通過乾燥方式，線材經過加熱器烘乾。
- 線材直接通過加熱室，設有定時功能，能在每天上班前自動將水溫加熱至工作溫度。

| model | WCS-10 | WCS-16 |
|------------|----------|----------|
| Wire range | 5.5~10mm | 5.5~15mm |





DRAWING MACHINE

抽線機系列

Specifications subject to change without prior notice.

*規格如有變更，不另行通知。



STRAIGHT LINE WIRE DRAWING MACHINE

直線式伸線機

■ SCWD-600T



- Heavy duty – High Speed wire drawing machine.
 - Designed to produce high-quality wire: low, medium, high carbon, stainless, zinc coated wire or alloy wire.
 - Configurations from 2-16 drafts.
 - Capstan diameters from 300mm to 900mm.
 - Dancer-arm speed control.
 - High-efficiency Cheng I Wire patented gearbox. (>95% through the entire speed range.)
 - Optional induction hardened, ceramic or tungsten carbide coating capstans.
 - Capstans provided with Cheng I Wire's superior and patented capstan cooling technology.
 - Die boxes prepared for single or double dies, normal or pressure dies.
 - Direct or indirect water-cooled dies.
 - Optional supplemental air cooling of the wire.
 - No specialized foundation required.
- Other general equipment depending on customer requirements:
- Laser gauge
 - Vibration dampening rollers.
 - Custom software packages for supervisory control and data acquisition
 - Rolling cassettes to produce smooth, round or shaped wires.
 - Rolling cassettes to produce cold-rolled concrete wire.
 - Wet drawing cassette for the bright wire.
 - Rotating die boxes for the precision wire.



- 適合低 / 中 / 高碳鋼線，不鏽鋼線或合金線材。
- 可提供 2 至 16 道配置。
- 專屬線胴冷卻系統，提供極高的冷卻能力。
- 正一直線專屬高效率齒輪箱，高達 95% 傳動效率。
- 眼模採強制水冷卻系統。
- 每一機台安裝鼓風機，提供線材額外冷卻。
- 可搭配輥輪組使用。
- 線胴表面提供鎢鋼或陶瓷噴塗。

| model | SCWD-300 | SCWD-400 | SCWD-600 | SCWD-700 | SCWD-800 | SCWD-900 |
|--------------|----------|----------|-----------|----------|----------|----------|
| Wire range | ≤ 2.0mm | ≤ 3.2mm | 6.5~5.5mm | ≤ 8.0mm | ≤ 10mm | ≤ 13mm |
| Capstan Dia. | Ø300 | Ø400 | Ø600 | Ø700 | Ø800 | Ø900 |

SINGLE DRAFT OTO DRAWING MACHINE

單模過桿式伸線機

■ DCD-600H



| model | DCD-400H | DCD-600H | DCD-760H |
|------------|---------------------|-----------|-----------|
| Wire range | $\leq 3.2\text{mm}$ | 5.5~6.5mm | 5.5~9.0mm |
| Capstan | 400mm | 600mm | 760mm |

- For low carbon and high-carbon wire.
- Modular design and scalable by adding additional units.
- High-efficiency Cheng I Wire patented gearbox. (>95% through the entire speed range.)
- Tungsten carbide coating capstan.
- Water cooled capstan and direct or indirect water-cooled dies.
- Die boxes prepared for single or double dies, normal or pressure dies.
- Optional supplemental air cooling of the wire.
- 適用高 / 低碳鋼線材。
- 模組化設計，可通過增加機台達到擴充效能。
- 專屬高效率齒輪箱，高達 95% 傳動效率。
- 線胴表面提供鎢鋼噴塗。
- 專屬線胴冷卻系統，提供極高的冷卻能力。
- 眼膜盒採取強制式水冷，可強力冷卻眼膜。
- 眼模盒可搭配基本單模或是雙模壓力模使用。
- 機台安裝鼓風機，提供線材額外空氣冷卻。

DOUBLE DRAFT OTO DRAWING MACHINE

雙模過桿式伸線機

■ DCD-600/460H



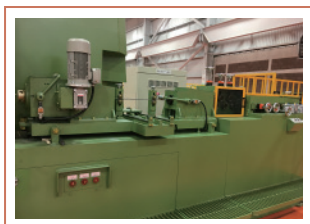
| model | | DCD-400/320 | DCD-600/460 |
|------------|-------|---------------------|-------------|
| Wire range | | $\leq 3.2\text{mm}$ | 5.5~6.5mm |
| Capstan | Upper | 400mm | 600mm |
| | Lower | 300~320mm | 430~480mm |

- For low carbon and high carbon wire.
- Modular design and scalable by adding additional units.
- High-efficiency Cheng I Wire patented gearbox. (>95% through the entire speed range.)
- Tungsten carbide coating capstan.
- Die boxes prepared for single or double dies, normal or pressure dies.
- Water cooled capstan and direct or indirect water-cooled dies.
- Optional supplemental air cooling of the wire.
- Each OTO unit is equipped with two (2) draft capability.
- 適用低碳鋼線材。
- 模組化設計，可通過增加機台達到擴充效能。
- 線胴表面提供鎢鋼噴塗。
- 專屬高效率齒輪箱，高達 95% 傳動效率。
- 專屬線胴冷卻系統，提供極高的冷卻能力。
- 眼模盒可搭配基本單模或是雙模壓力模使用。
- 眼模盒採取強制式水冷，可強力冷卻眼膜。
- 機台安裝鼓風機，提供線材額外空氣冷卻。
- 每一伸線機台可安裝兩個伸線眼模。

INVERTED VERTICAL CAPSTAN WIRE DRAWING MACHINE

倒立式伸線機

- IVD-400 ■ IVD-600
- IVD-800 ■ IVD-1000



| model | IVD-400 | IVD-600 | IVD-800 | IVD-1000 |
|------------|---------------------|-----------|-----------|------------|
| Wire range | $\leq 4.0\text{mm}$ | 5.5~8.0mm | 5.5~15mm | 10~26mm |
| Capstan | 400mm | 600mm | 650~800mm | 800~1000mm |

- Single draft wire drawing machine.
 - Capable of drawing all types ferrous, non-ferrous and alloy wires.
 - Suitable for drawing round, hexagonal and square wires.
 - Water cooled capstans and dies.
 - Die boxes prepared for single or double dies, normal or pressure dies.
 - Single or double position coil take-up.
 - HMI for easy operation and monitoring.
 - Optional accessories are available to help with the production process.
- 單模式拉線機。
 - 適用於生產高 / 低碳鋼線、有色金屬線、合金鋼線。
 - 適用於生產各種圓形線、六角線及四角線。
 - 線胴表面提供錳鋼或高碳鋼噴塗。
 - 線胴有水冷卻系統。
 - 可搭配雙台車使用。
 - 搭配人機介面，可將生產數據呈現，便利操作者監測及操作設備。
 - 提供多種配件可選購，達到提高生產效率及生產品質。

■ IVD-1200 ■ IVD-1300
■ IVD-1400



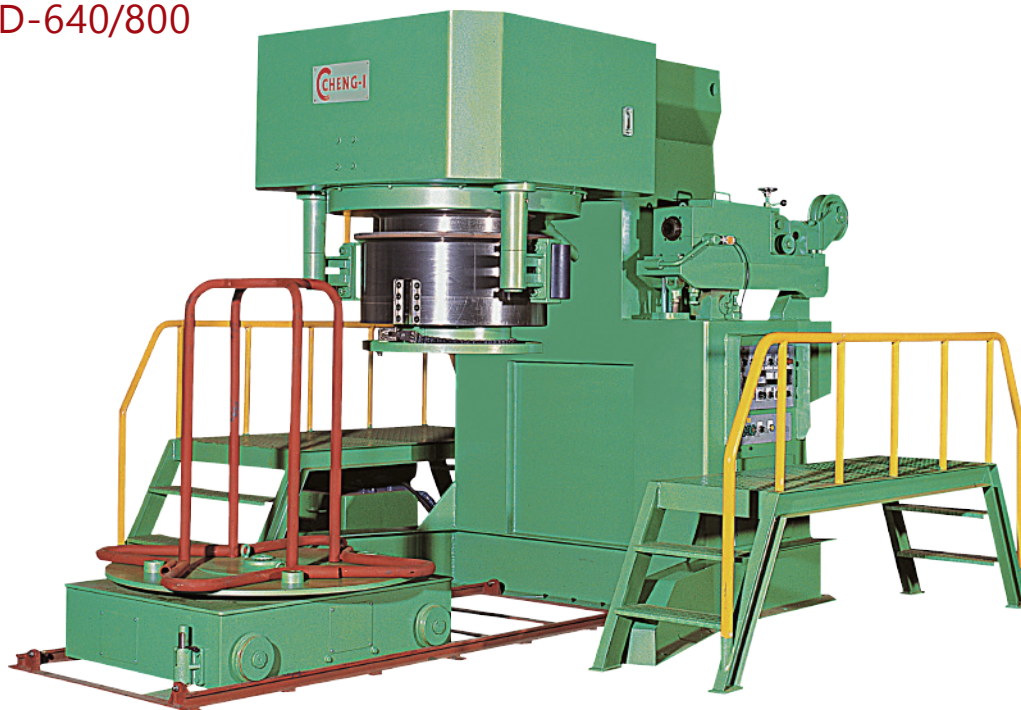
| model | IVD-1200 | IVD-1300 | IVD-1400 |
|------------|----------|----------|----------|
| Wire range | 20~32mm | 20~36mm | 30~40mm |
| Capstan | 1200mm | 1300mm | 1400mm |

- Single draft wire drawing machine.
- Capable of drawing all types ferrous, non-ferrous and alloy wires.
- Suitable for drawing round wires.
- Die boxes prepared for single or double dies, normal or pressure dies.
- Water-cooled capstans and dies.
- HMI for easy operation and monitoring.
- Optional Hydraulic pressure roller system to control cast.
- Optional automatic or semi-automatic chucking and clipper.
- Optional accessories are available to help with the production process.
- 單模式拉線機。
- 適用於生產高 / 低碳鋼線、有色金屬線、合金鋼線。
- 線胴表面提供鎢鋼或高碳鋼噴塗。
- 線胴有水冷卻系統。
- 可搭配雙台車使用。
- 搭配人機介面，可將生產數據呈現，便利操作者監測及操作設備。
- 壓線輪採油壓系統，以達到穩定壓制效果。
- 提供自動與半自動油壓式夾線器可選購。
- 提供多種配件可選購，達到提高生產效率及生產品質。

INVERTED VERTICAL CAPSTAN WIRE DRAWING MACHINE (DOUBLE DRAFT)

倒立式伸線機（雙模式）

■ IVD-640/800



| model | IVD-640/800 | |
|------------|--------------------------|--------------------------|
| Wire range | Single Draft 6.0~15mm | Double Draft 6.0~12mm |
| Capstan | Upper Capstan 640mm | Lower Capstan 800mm |

- Double draft wire drawing machine.
- Capable of drawing ferrous and alloy wire.
- Suitable for drawing round wires.
- Water cooled capstan.
- Water cast and helix adjusted in the die.
- Direct water-cooled dies.
- HMI for easy operation and monitoring.
- Equipped for a single (1) or double (2) draft.
- Optional accessories are available to help with the production process
- 單模 / 雙模 拉線機。
- 眼模盒座可透過油壓升降系統，調整搭配單模或雙模使用。
- 適用於圓線。
- 線胴表面提供鎢鋼或高碳鋼噴塗。
- 線胴有水冷卻系統。
- 可搭配雙台車使用。
- 搭配人機介面，可將生產數據呈現，便利操作者監測及操作設備。
- 提供多種配件可選購，達到提高生產效率及生產品質。

INVERTED VERTICAL CAPSTAN WIRE ROLLING MACHINE

倒立式伸線機（壓花）

■ IVD-800R4



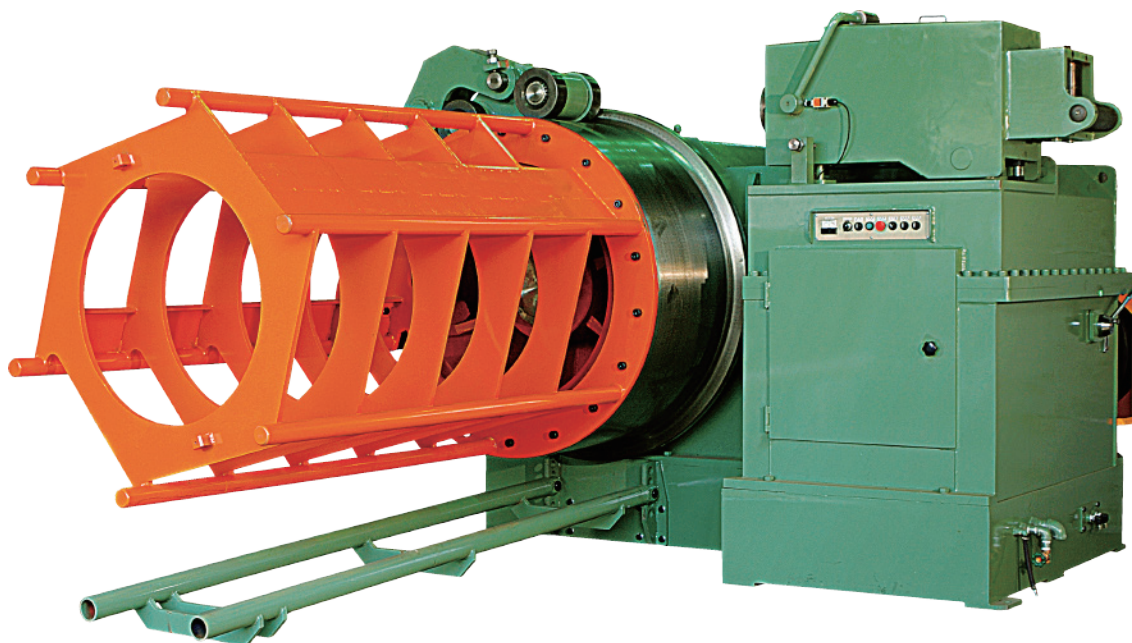
| model | IVD-600R | IVD-800R4 |
|------------|-----------|-----------|
| Wire range | 5.5~8.0mm | 5.5~13mm |
| Capstan | 600mm | 800mm |

- Single draft machine equipped with a cool-rolling cassette.
- Designed to produce smooth or deformed reinforcing steel.
- Water cooled capstan.
- Wire cast and helix adjusted at the cassette.
- Single or double position coil take-up.
- HMI for easy operation and monitoring
- Equipped with an integrated descaling machine.
- Optional accessories are available to help with the production process.
- 單模搭配壓花滾輪拉線機。
- 適用於圓線或壓花線材。
- 線胴有水冷卻系統。
- 線胴表面提供錳鋼或高碳鋼噴塗。
- 可搭配雙台車使用。
- 搭配人機介面，可將生產數據呈現，便利操作者監測及操作設備。
- 可搭配除銹機使用。
- 提供多種配件可選購，達到提高生產效率及生產品質。

HORIZONTAL WIRE DRAWING MACHINE

臥式伸線機

■ HWD-1300



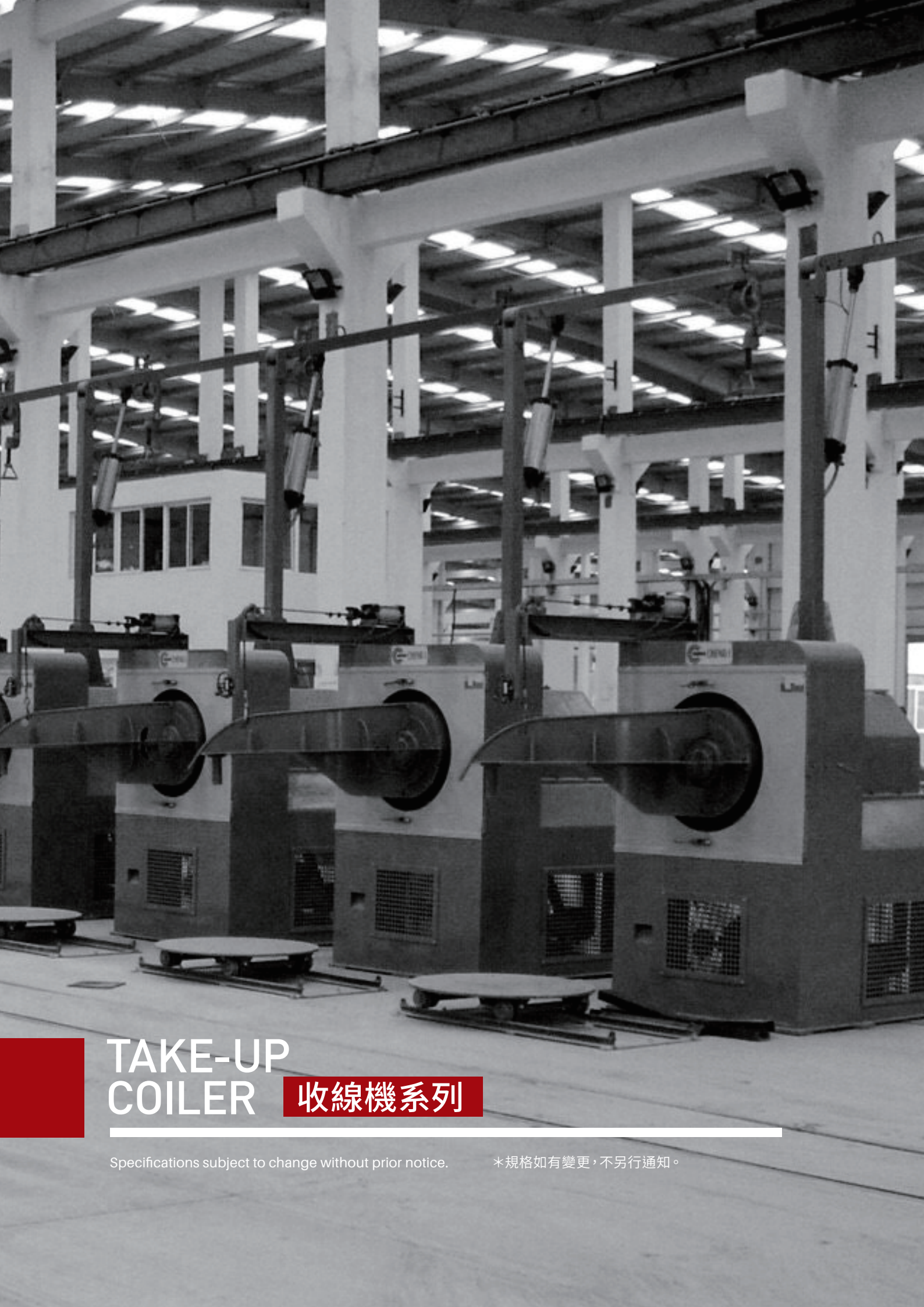
| model | HWD-1050 | HWD-1300 | HWD-1500 |
|------------|----------|----------|----------|
| Wire range | 20~30mm | 20~36mm | 30~50mm |
| Capstan | 1050mm | 1300mm | 1500mm |

- Single draft wire drawing machine.
 - Developed for heavy wires. Capable of drawing all type of ferrous and alloy wires.
 - Wire working range up to 50 mm.
 - Capstans from 1050 to 1500 mm.
 - Block pull from 200,000 N to 500,000 N.
 - Water cooled drawing die.
 - Direct water-cooled drawing die.
 - Two speed gearbox for the prefect balance of speed performance and production process.
- Optional accessories are available to help with the production process.
- Integrated wire pay-off, pre-straightening and feeding unit.
 - Integrated shaving-pointing machine.

■ HWD-1500BC



- 單模式臥式拉線機。
- 適合低 / 中碳鋼及合金鋼線。
- 適用於 30mm 至 50mm 線材。
- 眼模盒有水冷卻系統。
- 有兩段速度可供調整，以滿足不同線徑生產需求。
- 提供多種配件可選購，達到提高生產效率及生產品質。
- 可搭配線頭車削裝置使用。
- 可搭配送線裝置使用。
- 可選配可傾翻式收料線架。
- 可選配油壓式夾頭。
- 可選配有動力式壓線輪。
- 可選配線徑大小控制裝置。



TAKE-UP COILER

收線機系列

Specifications subject to change without prior notice.

*規格如有變更，不另行通知。

HIGH SPEED COILERS - HORIZONTAL CAPSTAN

收線機

■ NSC-600DW

■ NSC-600



- 提供 300 mm 至 900 mm 尺寸的線胴選擇。
- 提供抽線眼膜或無抽線眼膜選擇。
- 線胴表面有碳化鎢噴塗，強化線胴表面硬度及使用壽命。

- Capstan sizes from 300mm to 900mm.
- Static capstan with horizontal axis coiling.
- For coiling all types of drawn wire.
- Optional drawing or non-drawing capability.
- Cast and helix straighteners and roller assemblies.
- Tungsten carbide coated capstan wear-surfaces for superior production and lifespan.
- External capstan assembly is forced air-cooled.

- 線胴與眼膜有水冷卻系統 (有眼膜式)。
- 提供線材線圈大小與間隙調整輪。
- 提供風冷卻系統，達到冷卻線材表面需求。
- 可搭配不同排線設備達到排線需求。

| model | NSC-300 | NSC-400 | NSC-400DW | NSC-600 | NSC-600DW | NSC-700 | NSC-760 | NSC-760DW |
|---------------|-----------|-----------|-----------|-----------|-----------|-----------|-----------|-----------|
| Finished wire | 0.7~2.4mm | 1.0~3.2mm | 0.9~3.2mm | 1.6~4.5mm | 1.6~4.2mm | 2.6~5.5mm | 3.2~6.0mm | 3.2~6.0mm |

DRAWING COILER FOR SKIN-PASS DRAFTING

精抽收線機

■ NSC-600S



- The skin-pass coiler used for drawing CHQ and other ferrous alloy wires.
- Integrated advanced control, length measurement, and monitoring.
- Equipped with pneumatic "goose neck" lift for continuous production when changing carriers wire feeder.
- Accumulation system available for a non-stop production.
- 精抽收線機適用於球化線材精抽之用。
- 設有定量停止裝置。
- 附有氣壓升降式供線設備。

| model | NSC-400S | NSC-600S | NSC-700S |
|------------|-----------|-----------|-----------|
| Wire range | 0.8~2.4mm | 2.1~4.5mm | 3.0~5.5mm |
| Capstan | 400mm | 600mm | 670/700mm |

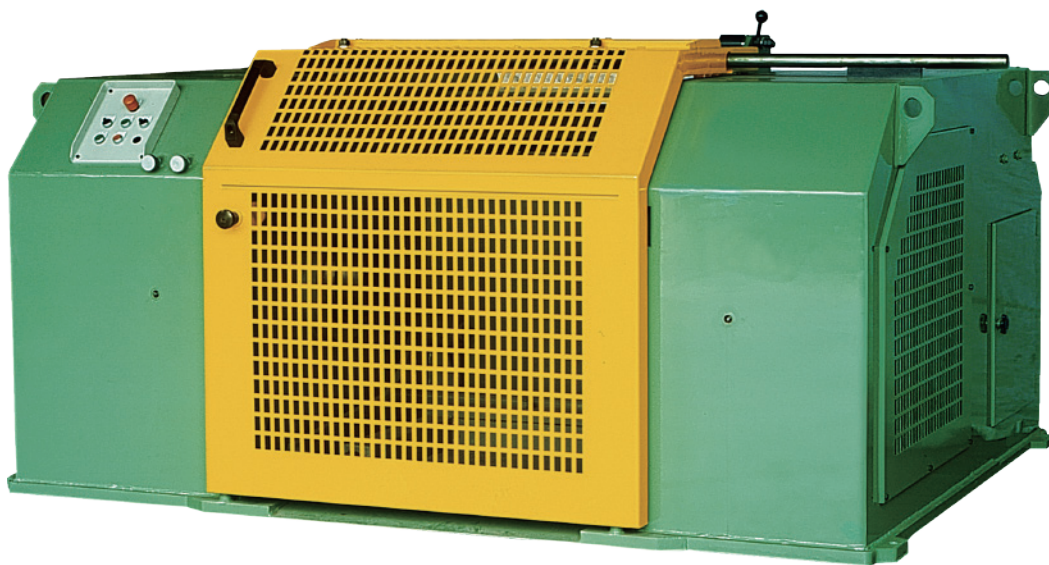
SPOOLER-HORIZONTAL

工字輪捲取機

■ SSPC-1000

■ SSPC-2000

■ SSPC-3000



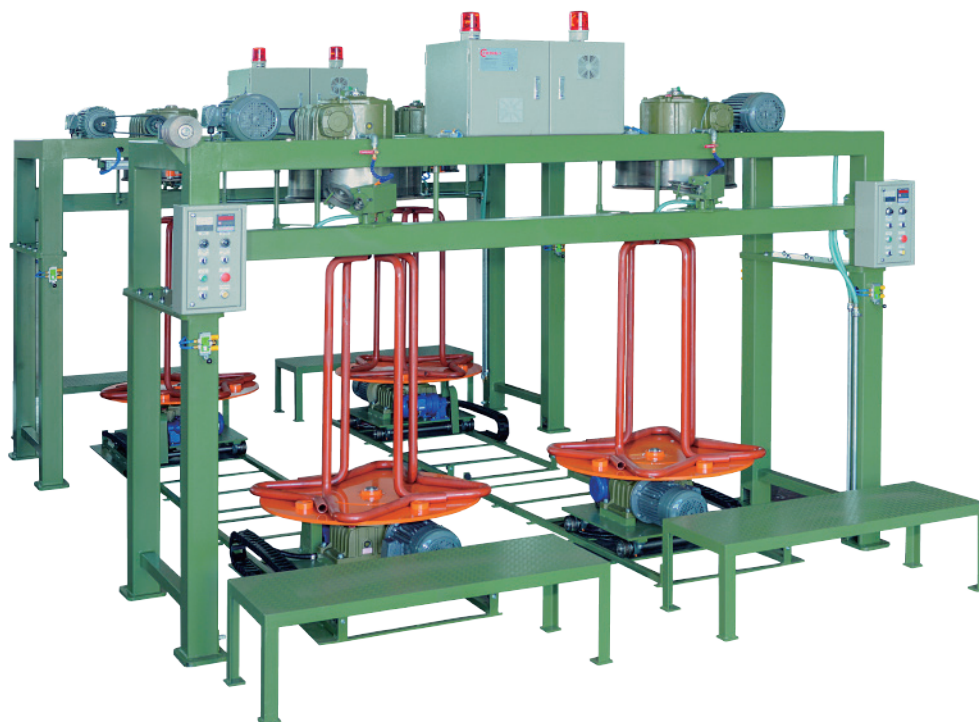
| model | SSPC-400 | SSPC-1000 | SSPC-2000 | SSPC-3000 |
|--------|----------|-----------|-----------|-----------|
| Flange | <400 | 400~710 | 710~1000 | >1000 |

- Spooler with horizontal winding axis collects all types of drawn wire onto rigid or collapsible spools. Can be used with various size and types of spools.
- Type of wire: Ferrous, non-ferrous, stainless steel, and alloy.
- Range of Ø of wire to be wound: from 0.8 to 5.0 mm.
- Capacity and size of spools to customer requirement: 200 - 3000 kg.
- Designed to load single spools, with flange size from diameter 200 mm to 1,800 mm.
- Can be customized to use any type of spool, DIN or customer standard.
- Hydraulic lifting and lowering of spools by way of conical pintles.
- 適用於各種 DIN 或客戶指定的線軸尺寸。
- 適合低 / 中碳鋼及合金鋼線。
- 可收取線材線徑從 0.8 到 5.0 mm。
- 可依據客戶要求收取線材 200 - 3000 公斤。
- 設計用於裝載單個線軸，線軸法蘭尺寸從 200mm 到 1,800 mm。
- 可搭配拉線機使用。

MULTI-STATION PAY-OFF & TAKE-UP SYSTEM

倒立型下取式捲取機（附梅花形排列線架）

■ IVC-600F



| model | IVD-400 | IVD-400F | IVD-600 | IVD-600F | IVD-760 | IVD-760F |
|------------|-----------|-----------|-----------|-----------|-----------|-----------|
| Wire range | 0.9~2.1mm | 0.9~2.1mm | 1.6~4.2mm | 1.6~4.2mm | 3.0~5.0mm | 3.0~5.0mm |
| Capstan | 400mm | 400mm | 600mm | 600mm | 760mm | 760mm |

- For low, medium, high carbon or stainless-steel wire.
- For thermal treatment and/or coating and/or cleaning operations.
- Modular and scalable construction.
- PAY-OFFS:
 - Static solutions with overhead flyer.
 - Dynamic solutions, mechanically braked or motorized.
 - Designed for Carrier or spools.
- TAKE-UPS:
 - Pattern-laying on a tilted rotating table to increase coil weight.
 - "V" groove static-block or flat live-block.
 - Skin-Pass drawing version available.
- 適用於高 / 中 / 低碳鋼線，不銹鋼線等。
- 適用於熱處理和 / 或塗覆和 / 或清潔使用。
- 放線系統：
 - 靜態 / 動態放線裝置。
 - 適用於線架與線軸。
- 收線系統：
 - 成品線放在傾斜的旋轉台車上、以增加線材重量和整齊排列。
 - 可裝置 "V" 型線胴或 "平" 線胴。
 - 可選擇 "精抽" 系統。



CUTTING
MACHINE

切斷機系列

Specifications subject to change without prior notice.

＊規格如有變更，不另行通知。

HIGH SPEED WIRE STRAIGHTENING & CUTTING MACHINE

高速直線切斷機

■ SCM-200 SERIES

■ SCM-300 SERIES



| model | SCM-320C | SCM-330C | SCM-210 | SCM-220 | SCM-230 |
|-----------------------------|-----------|-----------|-----------|----------|----------|
| Cols rolled and Ribbed wire | 4.0~10mm | 5.0~12mm | | | |
| Hot ribbed wire | 4.0~8.0mm | 5.0~10mm | 4.0~7.0mm | 4.0~10mm | 4.0~12mm |
| High tensile wire | 4.0~9.0mm | 5.0~9.0mm | | | |
| Speed (M/min) | 50~120 | 50~120 | 30~140 | 30~140 | 30~140 |
| Min. Length | 250mm | 300mm | 200mm | 250mm | 300mm |

■ For low, medium, high carbon, stainless, zinc coating wire or alloy wire.

■ Cutting length up to 12 meters.

■ C / S / F series stand for the different cutting methods, respectively, for the hydraulic, fixed shear and the flying shear.

■ 適用於低碳鋼線、合金鋼線。

■ 剪斷長度最長可達 12M。

■ C/S/F 各系列為不同的剪斷方式，分別為油壓、定剪、飛剪。



PAY-OFF MACHINE

放線系統

Specifications subject to change without prior notice.

*規格如有變更，不另行通知。

OVERHEAD PAY-OFF

氣壓升降式供線柱

■ PLW-10



- PLW Pay-off is designed for low, medium, high carbon or stainless wire.
- Pay-off speed depends upon the pay-off model and height.
- Continuous operation.
- Ergonomic wire threading with pneumatic tilting.
- Wire guide cage acts as both a guide and a wire snarl detector.
- 使用氣壓做升降控制。
- 可連續生產。
- 導線籠可作為導線裝置，也可作為纏線偵測器。

| model | PLW-6 | PLW-10 |
|------------|-----------|----------|
| Wire range | 2.0~3.2mm | 5.5~10mm |

TWO POSITION WIRE SUPPLY STANDS WITH TURN TABLE

盤元轉盤

■ TWS-10

- The continuous operation allows for coil head-to-tail butt welding.
- When one side has finished drawing, turn the device 180 degrees to continue the drawing process. Meanwhile, you can load a new wire rod.
- 兩邊盤元線頭與線尾可相接，可連續生產。
- 設備轉向 180 度後可不停機繼續抽線。

| model | TWS-6 | TWS-10 |
|------------|-----------|-----------|
| Wire range | 2.0~3.2mm | 5.5~6.5mm |



OVERHEAD PAY-OFF TOWER WITH TILTING LOAD TABLES

傾翻供線柱

■ PWR-7

■ PWR-15



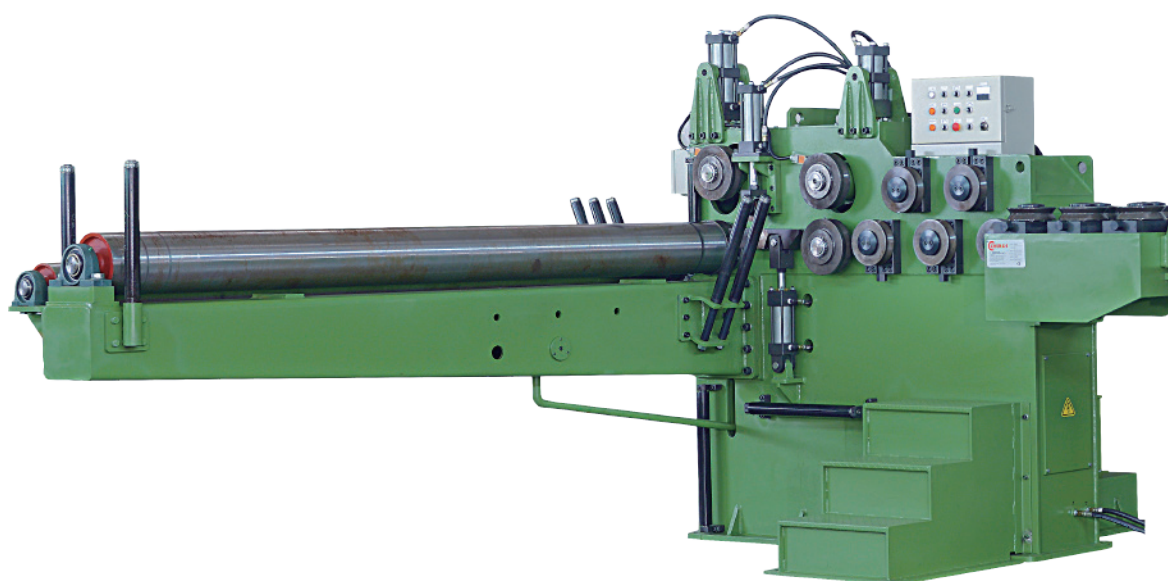
- PWR Series pay-offs are designed for medium carbon, low carbon, and stainless-steel wire rods.
- Rod inlet Ø from 4.75 up to 15 mm.
- Pay-off speeds up to 7.0 m/s, depending upon pay-off model.
- Height can be customized from 5-12 meters or as required.
- The continuous operation allows for coil head-to-tail butt welding.
- Ergonomic wire threading.
- Two tilting stems for easy coil loading.
- Snarl switch and wire rod break sensor.
- 適用中、低碳鋼線、不鏽鋼、合金鋼線。
- 兩個翻轉傾斜桿，可方便原料線材裝載。
- 設備高度可客製化從 5 – 12 mm。
- 纏線和斷線檢知器。
- 兩捆盤元線頭線尾可提前焊接，連續供料。

| model | PWR-7 | PWR-15 |
|------------------|-----------|----------|
| Wire range | 5.5~8.0mm | 5.5~13mm |
| Loading capacity | 2,300kgs | 2,300kgs |

WIRE PAY-OFF, PRE-STRAIGHTENING AND FEEDING UNIT

橫式送線機

- WDM-22 ■ WDM-35
- WDM-45 ■ WDM-50



| model | WDM-22 | WDM-35 | WDM-45 | WDM-55 |
|------------|---------|---------|---------|---------|
| Wire range | 10~22mm | 20~35mm | 30~45mm | 30~50mm |

- Includes feeding, straightening Wire.
- Wire working range up to 50 mm.
- Vertical and horizontal straightening rollers are equipped.
- It can be supplied with a rotating base, in the double-arm version and equipped with a wire cut-off device.
- 設備包含送線、線頭及線材矯直功能。
- 適用 20mm 至 50mm 之盤元線徑。
- 含水平、垂直矯直輪，使線材平直到下一製程。
- 可提供雙臂旋轉供線台與切斷裝置。

SHAVING-POINTING MACHINE

線頭切削機

- SPM-22 ■ SPM-35
- SPM-45 ■ SPM-55



| model | SPM-22 | SPM-25E | SPM-35E | SPM-35 | SPM-45 | SPM-55 |
|------------|---------|---------|---------|---------|---------|---------|
| Wire range | 10~22mm | 10~25mm | 20~32mm | 20~35mm | 30~45mm | 30~50mm |

- Equipped with WDM series.
- Rod is pointed after the wire feeding units.
- Point lengths according to customer requirement, the machine can shave various lengths.
- Tool opening system can be controlled either manually or automatically.
- Cutting and pointing speed is adjustable.
- 配合自動送線機使用。線材從自動送線機過來後，接著車削線頭。
- 照拉線機需求，自訂不同車削長度。
- 可選擇手動或自動刀具打開系統。
- 可調整車削速度。

SNARL STOP SWITCH

纏結開關

■ SS-7

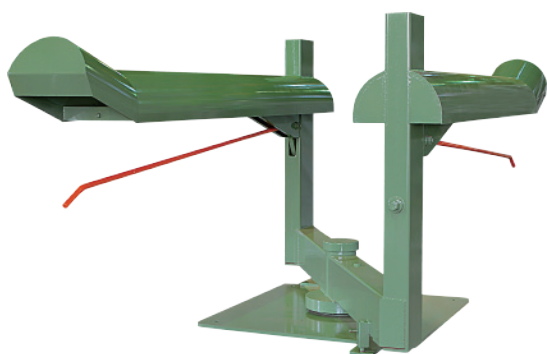


- Designed for in-line to prevent wire breaks due to entanglement.
- 設計用於防止線材纏結導致斷線。

Z-TYPE DOUBLE STATION ROD FLIPPER

Z 型供線盤

■ ZDFR-7



- Continuous operation allows for coil head-to-tail butt welding.
- When one side has finished drawing, turn the device 180 degrees to continue the drawing process. Meanwhile, you can load a new wire rod.
- 兩邊盤元線頭與線尾可相接，可連續生產。
- 設備轉向 180 度後可不停機繼續抽線。

DOUBLE STATION ROD FLIPPER

雙面式供線柱架

■ DFR-7



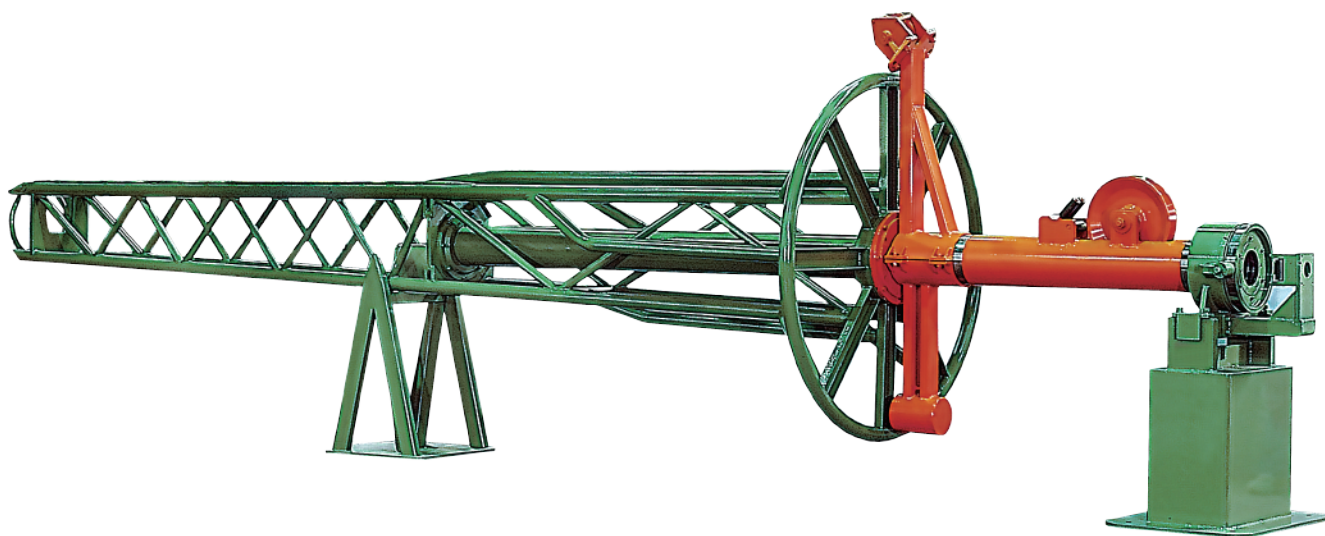
| model | ZDFR-7/DFR-7 |
|------------------|----------------|
| Wire range | 5.5~15mm |
| Loading capacity | 1,500~2,300kgs |

HORIZONTAL TYPE ROTARY PAY-OFF

橫式盤元供線架

■ WRP-8

■ WRP-13



| model | WRP-8 | WRP-15 |
|------------|---------------------|--------------------|
| Wire range | $\leq 8.0\text{mm}$ | $\leq 15\text{mm}$ |

- WRP Series pay-offs are designed for high carbon wire rods.
- Rod inlet \varnothing from 5.5 up to 15 mm.
- Pay-off speed according to pay-off model.
- The continuous operation allows for coil head-to-tail butt welding.
- Ergonomic wire threading.
- Horizontal loading beam.
- Driven pay-off flyer, integrated coil transporting unit.
- 適用高碳鋼線。
- 適用原料尺寸從 5.5 到 15 mm。
- 兩捆盤元線頭線尾可提前焊接，連續供料。
- 系統運轉平穩供線，不易損壞線材。

MOTORIZED ROTARY PAY-OFF

電動轉式供線盤

■ RWE-18



- Operation speed could be synchronized with the wire drawing machine or work alone.
- When the wire snarl, the wire stand will stop with wire drawing machine.
- Usually equipped with IVD series.
- There is a track under the cart with RWE-18M. The cart is movable. The movable distance is 2m.
- 可選擇單獨寸動或與伸線機同步運轉。
- 纏線時，供線盤碰觸到微動開關則與拉線設備一起停止。
- 通常與 IVD 搭配使用。
- RWE-18M 供線盤可前後移動距離約 2 米，以便將線頭送至送線輪。

| model | RWE-18/RWE-18M | RWS-18 |
|------------------|----------------|----------|
| Wire range | 5.5~32mm | 5.5~32mm |
| Loading capacity | 2,300Kgs | 2,300Kgs |

ROTARY PAY-OFF

轉式供線盤

■ RWS-18

- Non-powered wire rod stand.
- With mechanical brake.
- When the wire snarls, the wire stand will stop with wire drawing machine. (RWS-18M series)
- 無動力放線盤。
- 含機械式剎車。
- 纏線時，供線盤碰觸到微動開關則與拉線設備一起停止。(RWS-18M 系列)



90° TILTED TYPE PAY-OFF

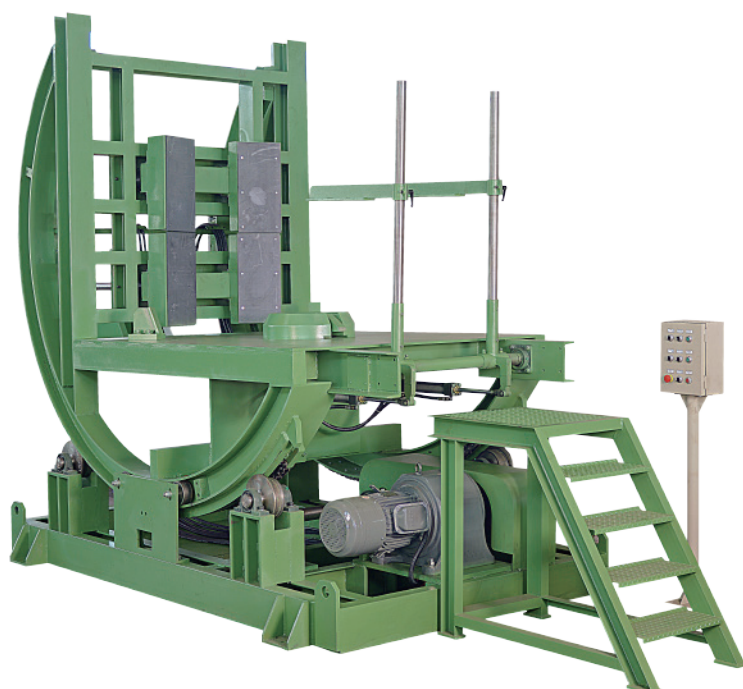
90 度傾翻式供線設備

■ WRM-3000



- Tilting, horizontal and Vertical moving by hydraulic system.
- 水平與垂直翻轉，達到水平入料，直立供料功能。

■ CTM-1500



| Model | WRM-3000 |
|------------------|----------|
| Wire range | 10-32mm |
| Loading capacity | 3000kgs |



OTHER EQUIPMENT/ ACCESSORIES

其他設備 / 配件

Specifications subject to change without prior notice.

＊規格如有變更，不另行通知。

WIRE COMPACTOR (HORIZONTAL)

臥式壓線機

■ CM-10H



| model | CM-10H |
|-----------|-------------|
| Coil D. | 820-1200mm |
| Coil O.D. | 1130-1600mm |

- After compressing the wire, tie the wire with the strap.
- The wire touch area covered with MC Nylon to protect the wire surface.
- Compact distance up to 2000mm.
- 將線材壓縮後，配合打包帶將線綁緊。
- 線材接觸地方覆蓋尼龍板，保護線材表面。
- 壓縮行程可達 2000mm。

WIRE COMPACTOR (VERTICAL)

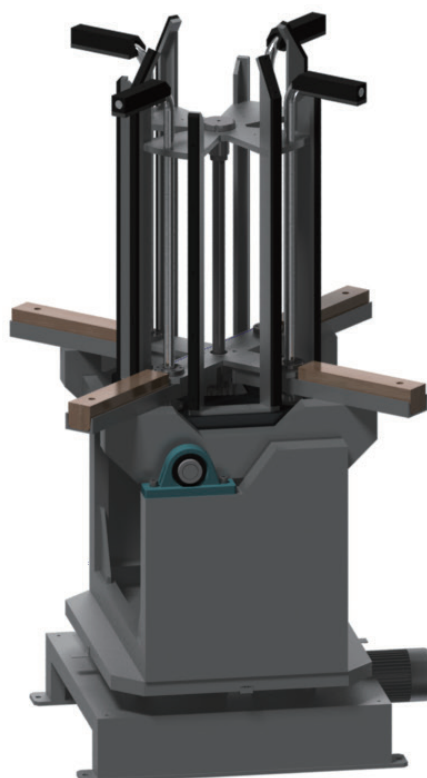
立式壓線機

■ CM-10V

- After compressing the wire, tie the wire with the strap.
- The wire touch area covered with MC Nylon to protect the wire surface.
- Compact distance up to 900mm.
- Designed for carrier or stripper.

- 將線材壓縮後，配合打包帶將線綁緊。
- 線材接觸地方覆蓋尼龍板，保護線材表面。
- 壓縮行程可達 900mm。

| model | CM-6V | CM-8V | CM-10V | CM-12V |
|-----------|-------|-------|--------|--------|
| Coil I.D. | 480 | 650 | 840 | 1030 |
| Coil O.D. | 1000 | 1200 | 1400 | 1500 |



COILER OPENER

開盤機

■ COM-36



- Designed for Low, Medium, high carbon, and alloy wire.

- Working Wire range from 15mm to 36mm.

- 適用於低 / 中 / 高碳鋼線，合金鋼線。

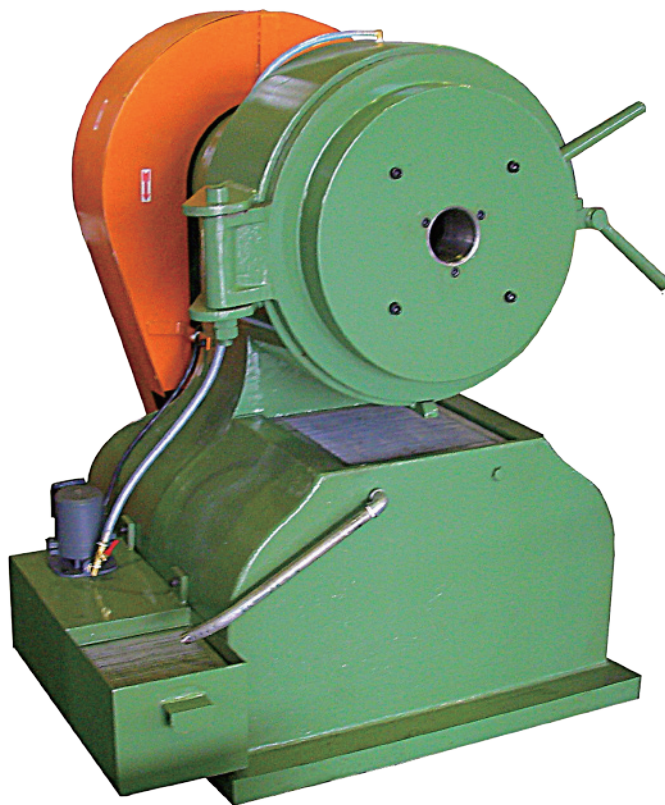
- 適用線徑最大到 36mm。

SWAGING MACHINES

線頭機

■ SM-03

■ SM-15



| model | SM-03 | SM-15 |
|------------|----------|---------|
| Wire range | 3.0~12mm | 10~30mm |

- Designed for Low, Medium, high carbon, stainless, alloy wire, and non-ferrous steel.
- To downsize the diameter of the wire end by forging.
- 適用於低 / 中 / 高碳鋼線，不鏽鋼線，合金鋼線和非鐵線材。
- 以捶打的方式，縮小入線頭直徑。

WIRE POINTING MACHINE – (Wire Pointer)

線頭機

■ RPM-15

■ RPM-25

■ RPM-35



- Designed for Low, Medium, high carbon, stainless, and alloy wire.
- Reduce the wire end diameter.
- Pointing head can rotate 90 degrees, the pointing roller becomes horizontal or vertical for ease of operation.
- 適合低 / 中 / 高碳鋼線，不鏽鋼線或合金線材。
- 縮小線頭直徑。
- 軋線輪可做 90 度翻轉。

| model | RPM-15 | RPM-25 | RPM-35 |
|------------|----------|---------|---------|
| Wire range | 7.0~15mm | 10~25mm | 19~35mm |

■ PM-6

■ PM-12

- Designed for Low, Medium, high carbon, stainless, and alloy wire.
- Reduce the wire end diameter.
- 適合低 / 中 / 高碳鋼線，不鏽鋼線或合金線材。
- 縮小線頭直徑。

| model | PM-6 | PM-12 |
|------------|------------------------|----------|
| Wire range | 1.0~7.0mm 0.7~3.2mm | 4.0~13mm |



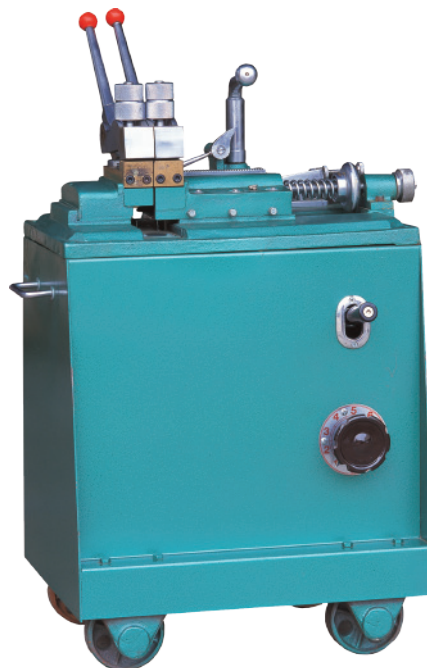
BUTT WELDERS

接線機

■ 4KVA



■ 5KVA



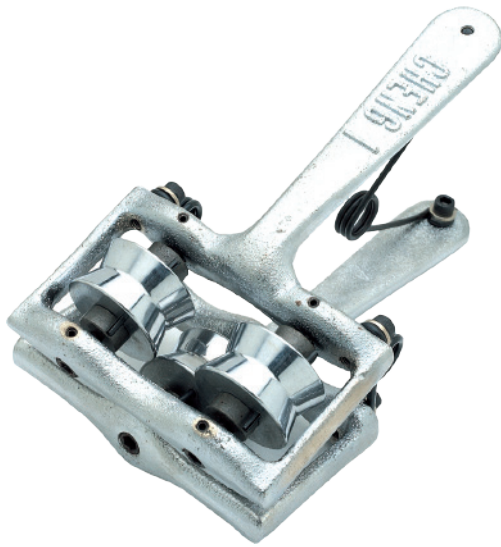
| model | 2KVA | 4KVA | 5KVA | 10KVA | 20KVA | 30KVA | 50KVA |
|-----------------|-----------|-----------|-----------|-----------|----------|----------|----------|
| steel wire | 0.4~2.6mm | 1.5~4.0mm | 2.5~6.0mm | 4.0~10mm | 5.0~15mm | 6.0~20mm | 10~25mm |
| Stainless steel | 0.4~2.0mm | 1.5~3.0mm | 2.5~5.0mm | 5.0~10mm | 5.0~12mm | 7.0~18mm | 9.0~22mm |
| Copper wire | 0.5~2.2mm | 1.2~3.2mm | 2.0~3.6mm | 3.6~8.0mm | 6.0~10mm | 8.0~15mm | 10~16mm |
| Aluminum wire | 0.6~2.6mm | 1.5~3.6mm | 2.5~6.0mm | 5.0~10mm | 5.0~16mm | 8.0~20mm | 10~22mm |

■ Continuous operation allows for coil head-to-tail butt welding.

■ 線頭兩端可使用此設備焊接在一起。

LUBRICATING APPLICATOR

粉夾



- Improved die life and optimizes lubricant pick-up.
- 提高模具壽命並提高潤滑粉附著。

| model | LA-4 | LA-7 |
|------------|-----------|----------|
| Wire range | 0.8~4.0mm | 4.0~15mm |

ROTARY DIE BOXES

迴轉眼模機

■ SRD-4N/SRD-7N ■ SRD-16/SRD-26/SRD-36

- Designed for SCWD, DCD, and IVD series.
- Improved die life and increase the wire surface roundness.
- Stirs the Lubricant powder and optimizes lubricant pick-up.
- The speed synchronizes with the wire drawing machine.
- Wire working range from 0.7mm to 36mm.
- 可搭配直線式伸線機或倒立型伸線機使用。
- 可提升眼模壽命及增加線材表面真圓度。
- 可攪拌潤滑粉以提高潤滑粉附著於線材表面。
- 旋轉速度可與拉線設備速度連動。
- 適用線徑從 0.7mm 到 36mm



| model | SRD-4N | SRD-7N | SRD-16 | SRD-26 | SRD-36 |
|------------|-----------|-----------|----------|---------|---------|
| Wire range | 0.8~3.2mm | 2.0~6.5mm | 5.5~15mm | 10~26mm | 20~34mm |

■ 製品製造流程

Hardware Wire (Use For Electroplate) 五金線 (電鍍用)

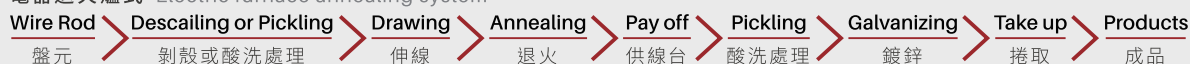


Galvanizing Wire (Hot Dip Type) 鍍鋅線 (熱浸式)

連續退火爐式 Continuous annealing system



電器退火爐式 Electric furnace annealing system



High Carbon Steel Wire 高碳鋼線



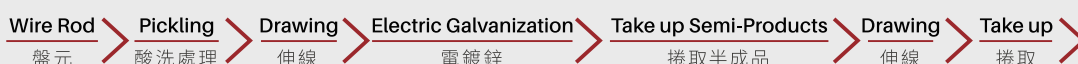
Steel Nail 鋼釘



P.C. Wire 預力鋼線



Flat Wire 扁線(紙箱釘、訂書釘用)



Stainless Steel Wire 不鏽鋼線



Spheroidizing Wire (AISI 1018~1022) 球化線



■ Weight Conversion Table

| | kg | g | lb | ounce |
|-------|---------|--------|--------|----------|
| kg | 1 | 1000 | 2.2046 | 35.2736 |
| g | 0.001 | 1 | 0.0022 | 0.035227 |
| lb | 0.4536 | 453.59 | 1 | 16 |
| ounce | 0.02835 | 28.35 | 0.0625 | 1 |

■ Pressure/Tension Conversion Table

| | psi | kg/cm2 | kg/mm2 | bar | mpa | n/mm2 |
|--------|-----------|---------|---------|----------|---------|----------|
| psi | 1 | 0.0703 | 0.0007 | 0.06894 | 0.00689 | 0.0029 |
| kg/cm2 | 14.223343 | 1 | 100 | 0.98067 | 0.09806 | 9.8039 |
| kg/mm2 | 1422.334 | 0.01 | 1 | 98.13542 | 9.8068 | 9.80392 |
| bar | 14.5038 | 1.01971 | 0.01019 | 1 | 0.1 | 0.042061 |
| mpa | 145.0377 | 10.197 | 0.10197 | 10 | 1 | 1 |
| n/mm2 | 344.75 | 0.09803 | 0.102 | 23.77499 | 1 | 1 |

■ "R" SERIES DIE SIZES

| STEEL WIRE DRAWING | MIN. WIRE SIZE | MAX. WIRE SIZE | STD NIB | HEIGHT | STD CASE | HEIGHT | GRADE COLBAT |
|--------------------|----------------|----------------|---------|--------|----------|--------|--------------|
| | DIA. | DIA. | DIA. | DIA. | DIA. | DIA. | % |
| R2 | 0.004 | 0.128 | 0.325 | 0.330 | 1.000 | 0.563 | 6 |
| R2 | 0.004 | 0.128 | 0.325 | 0.330 | 1.500 | 0.750 | 6 |
| R3 | 0.010 | 0.182 | 0.450 | 0.380 | 1.500 | 0.750 | 6 |
| R4 | 0.015 | 0.230 | 0.500 | 0.450 | 1.500 | 0.875 | 6 |
| RG | 0.020 | 0.250 | 0.562 | 0.500 | 1.500 | 0.875 | 6 or 12 |
| R5 | 0.020 | 0.280 | 0.625 | 0.600 | 1.500 | 0.875 | 6 or 12 |
| R6 | 0.025 | 0.350 | 0.710 | 0.700 | 2.000 | 1.125 | 12 |
| R7 | 0.100 | 0.425 | 0.768 | 0.768 | 3.000 | 1.375 | 12 |
| R8 | 0.220 | 0.516 | 1.000 | 0.820 | 3.000 | 1.750 | 12 |
| R9 | 0.310 | 0.687 | 1.187 | 0.820 | 3.000 | 1.750 | 12 |
| R10 | 0.400 | 0.750 | 1.500 | 1.000 | 3.000 | 2.000 | 12 |
| R10 | 0.400 | 0.750 | 1.500 | 1.000 | 4.000 | 2.000 | 12 |
| R11 | 0.710 | 1.125 | 1.830 | 1.250 | 4.000 | 2.250 | 12 |
| R12 | 0.950 | 1.375 | 2.185 | 1.375 | 4.000 | 2.375 | 12 |
| R14 | 1.225 | 1.750 | 2.560 | 1.375 | 6.000 | 2.500 | 12 |
| R15 | 1.475 | 2.250 | 3.000 | 1.375 | 6.000 | 2.500 | 12 |
| R15 | 1.475 | 2.250 | 3.000 | 1.375 | 7.000 | 2.500 | 12 |
| R16 | 1.850 | 2.500 | 3.500 | 1.375 | 6.000 | 2.500 | 15 |
| R16 | 1.850 | 2.500 | 3.500 | 1.375 | 7.000 | 2.500 | 15 |
| R17 | 2.225 | 3.000 | 4.000 | 1.500 | 9.000 | 3.000 | 15 |
| number | INCHES | INCHES | INCHES | INCHES | INCHES | INCHES | PERCENT |

■ "JIS" STANDARD DIE SIZES

| STEEL WIRE DRAWING | MIN. WIRE SIZE | MAX. WIRE SIZE | STD NIB | HEIGHT | STD CASE | HEIGHT |
|--------------------|----------------|----------------|---------|--------|----------|--------|
| | DIA. | DIA. | DIA. | DIA. | DIA. | DIA. |
| W101 | 0.2 | 0.7 | 6 | 4 | 24 | 7 |
| W102 | 0.5 | 1.5 | 9 | 6 | 24 | 12 |
| W103 | 0.9 | 2.5 | 12 | 8 | 30 | 15 |
| W104 | 2.5 | 4.0 | 15 | 10 | 42 | 20 |
| W105 | 4 | 6 | 20 | 14 | 55 | 24 |
| W106 | 6 | 8 | 25 | 18 | 60 | 28 |
| W107 | 8 | 10 | 30 | 22 | 70 | 35 |
| W108 | 10 | 13 | 35 | 25 | 85 | 40 |
| W109 | 13 | 16 | 40 | 27 | 100 | 45 |
| W110 | 16 | 20 | 50 | 30 | 125 | 50 |
| W111 | 20 | 26 | 60 | 35 | 145 | 60 |
| W112 | 26 | 32 | 70 | 40 | 175 | 70 |
| W113 | 32 | 38 | 80 | 45 | 195 | 80 |
| W114 | 38 | 46 | 90 | 50 | 215 | 90 |
| W115 | 46 | 54 | 100 | 50 | 230 | 90 |
| W116 | 54 | 62 | 110 | 50 | 230 | 90 |
| W117 | 62 | 70 | 120 | 55 | 250 | 100 |
| W118 | 70 | 78 | 130 | 55 | 275 | 100 |
| W119 | 78 | 86 | 140 | 60 | 295 | 110 |
| W120 | 86 | 94 | 150 | 60 | 315 | 110 |
| number | mm | mm | mm | mm | mm | mm |